

## INSTRUMENT APPROACH CHART - ICAO

LONDON GATWICK

LOC/DME

RWY 26L

(ACFT CAT A,B,C,D)



MSA 25NM ARP

APP 126.825, 118.950, 129.025

TWR 124.230, 134.230, 121.500\*

121.805

ATIS 136.525

GATWICK DIRECTOR

GATWICK TOWER (\*Emergency)

GATWICK GROUND

GATWICK INFORMATION

AD ELEVATION 203

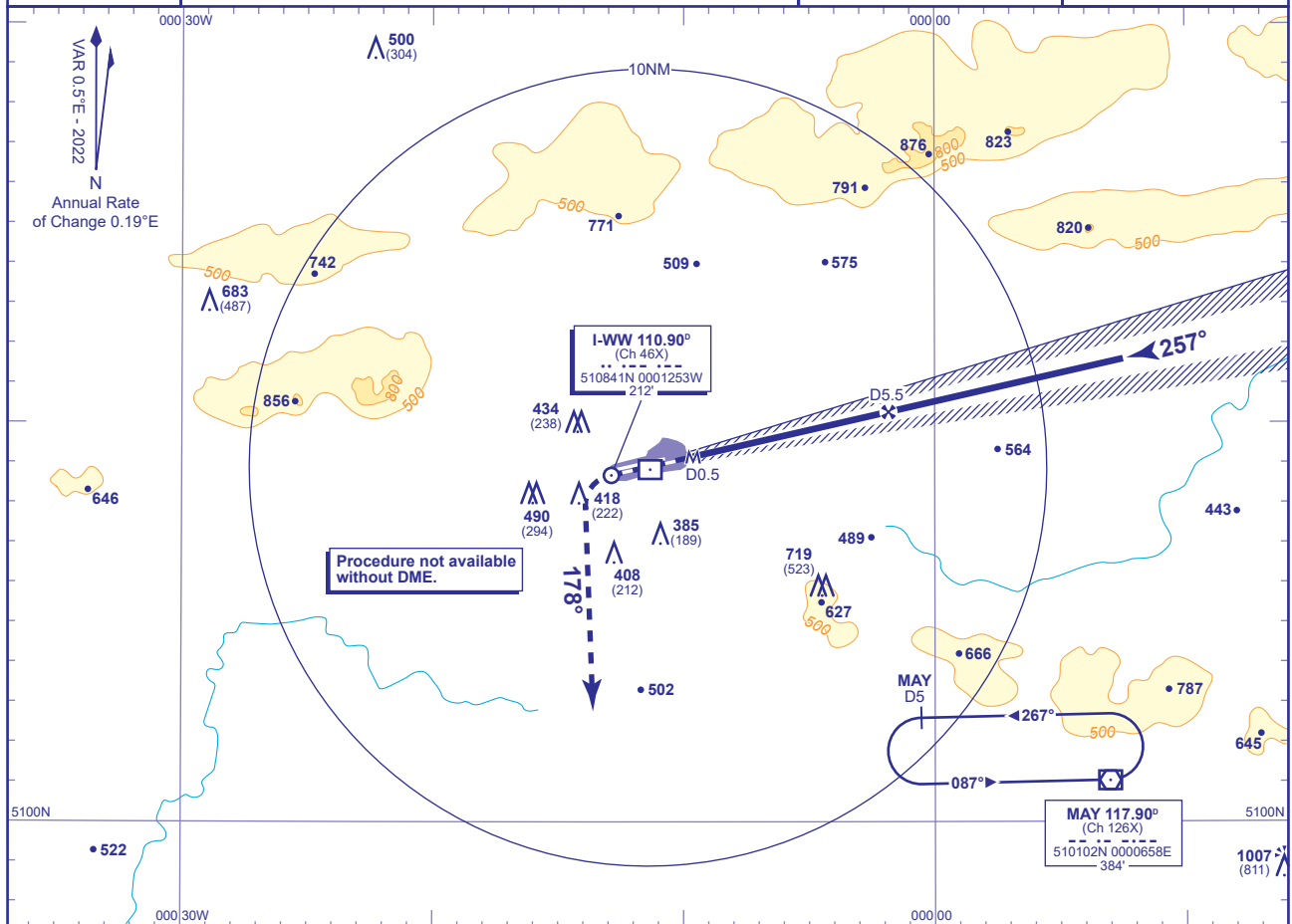
THR ELEVATION 196

OBSTACLE ELEVATION

1007 AMSL

(811) (ABOVE THR)

BEARINGS ARE MAGNETIC

TRANSITION ALTITUDE  
6000

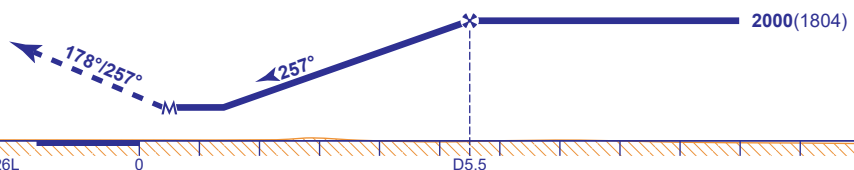
## RECOMMENDED PROFILE Gradient 5.2%, 320FT/NM

DME I-WW	5	4	3	2
ALT(HGT)	1840(1644)	1520(1324)	1200(1004)	880(684)

## MAPt I-WW DME 0.5

Climb to 3000 - straight ahead until passing 2000 or I-WW inbound DME 1 whichever is later, turn left heading 178°, then as directed by ATC.

RCF: Proceed as above, and continue on heading 178°, 2 minutes after initiating missed approach or passing I-WW DME 7, whichever is later, proceed to MAY VOR not above 3000.



Aircraft Category		A	B	C	D	Rate of descent	G/S KT	160	140	120	100	80
OCA (OCH)	Procedure	610(414)	610(414)	610(414)	610(414)		FT/MIN	850	740	640	530	420
VM(C)OCA (OCH AAL)	Total Area	800(597)	800(597)	1020(817)	1120(917)							

NOTE 1 For arrival and initial approach procedures see AD 2-EGKK-7-18.

CHANGE (5/25): VM(C)OCA(OCH AAL) CAT C. OCA(OCH).